



PUBLIC NOTICE

US Army Corps
of Engineers
Rock Island District

Applicant: Iowa Department of Transportation
CEMVR-OD-P-2020-581

Date: May 26, 2020
Expires: June 24, 2020
Section 404

Joint Public Notice
US Army Corps of Engineers
Iowa Department of Natural Resources

1. **Applicant:** Iowa Department of Transportation (IADOT), 800 Lincoln Way, Ames, Iowa 50010.

2. **Project Location:** The project is located on U.S. 69 in the town of Belmond, Iowa over the West Branch of the Iowa River and the Iowa River. The project is located in Section 19, Township 93 North, Range 23 West, Wright County, Iowa. Lat. 42.858534, Lon. -93.616739. UTM Z 15 NAD 83.

3. **Project Description:**

a. The proposed project will involve the replacement of the existing 111 feet 3 inches by 30 feet concrete beam bridge at U.S. 69 over the West Branch of the Iowa River, 1.0 mile north of Main Street in Belmond, with a new 209 feet by 68 feet continuous concrete slab bridge and the replacement of the existing, 182 feet 8 inches by 28 feet concrete slab bridge at U.S. 69 over the Iowa River, 0.7 mile north of Main Street in Belmond, with a new 307 feet 10 inches by 44 inches pretensioned, prestressed concrete beam bridge. This project includes the reconstruction of 0.8 mile (4,100 feet) of the U.S. 69 roadway from just north of the Union Pacific Railroad, to just south of the north junction with County Road C20 (C20). This project also includes improvements to the intersection at the south junction of U.S. 69 and C20. The proposed new bridges and roadway will be constructed on the existing horizontal alignment. The vertical alignment of the new bridges and roadway will be raised approximately 5 inches to improve freeboard for the new bridges and prevent roadway overtopping. The typical roadway cross-section will consist of a 28 feet wide roadway with 8 feet combination shoulders and 6:1/3:1 foreslopes. All of the new bridge abutments and riverbanks will be protected from scour with Class E revetment. Traffic will be maintained via an off-site detour.

b. The primary purpose of this project is to replace the existing structurally deficient U.S. 69 bridges over the West Branch of the Iowa River and the Iowa River on the north edge of Belmond, Iowa with new bridges. The secondary purpose is to improve the level of service of this section of U.S. 69 by reducing flood impacts to the roadway by raising its vertical grade. Both bridges needed to be strengthened to support HS20 loads in order to meet current design standards. Approximately, 1.20 acres of emergent wetland and 1.15 acres of forested wetland will be impacted by this project. Approximately, 413.6 linear feet of both banks of the West Branch of the Iowa River and 472.0 linear feet of both banks of the Iowa River will be impacted by this project. The project impact to wetlands cannot be avoided. To compensate for the project's impacts to wetlands, the IADOT proposes to purchase 1.20 emergent wetland credit and 1.15 forested wetland credits at one of three available wetland mitigation banks serving the project area.

4. **Agency Review:**

a. Department of the Army, Corps of Engineers. The Department of the Army application is being processed under the provisions of Section 404 of the Clean Water Act (33 U.S.C. 1344).

b. State of Iowa. The project plans have been submitted to the Iowa Department of Natural Resources for state certification of the proposed work in accordance with Section 401 of the Clean Water Act. The certification, if issued, will express the Department's opinion that the proposed activity will comply with Iowa's water quality standards (Chapter 61 IAC). The applicant has also applied for authorization of work in the floodplain pursuant to Chapter 455B of the Iowa Code and other applicable state permits. Written comments concerning possible impacts to waters of Iowa should be addressed to: Iowa Department of Natural Resources, 502 East 9th Street, Des Moines, Iowa 50319. A copy of the comments should be provided to the Corps of Engineers office (see paragraph 11. of this public notice for address).

5. **Historical/Archaeological:** The District Archaeologist consulted with the Iowa geographic information systems archeological site and survey databases online, including the HILD layers. The project area has been surveyed previously (R&C #150199025). The project was surveyed for cultural resources and coordinated by the IADOT in 2015. The IADOT

made a recommendation of **no historic properties affected** by letter dated July 8, 2015, coordinating the project under the expectation the project would be receiving Federal Highways Administration funding. The Iowa SHPO concurred with the determination July 29, 2015. Therefore, it is the opinion of the District Archaeologist there is low to no potential for intact historic properties to be affected by the proposed action. As such there will be **no historic properties affected** by the issuance of the permit because “the nature, scope, and magnitude of the work, and/or structures to be permitted are such that there is little likelihood that a historic property exists or may be affected” (33 CFR Part 325, Appendix C.3.b).

6. **Endangered Species:** District staff has performed a preliminary review of this application for the potential impact on threatened or endangered species pursuant to Section 7 of the Endangered Species Act as amended. The following threatened or endangered species are listed by the United States Fish and Wildlife Service (FWS) as occurring in Wright County, Iowa:

- Northern Long-eared Bat - *Myotis septentrionalis*
- Topeka Shiner - *Notropis topeka*
- Prairie Bush-Clover – *Lespedeza leptostachya*
- Western Prairie Fringed Orchid – *Platanthera praeclara*

The project will have no effect on the Topeka Shiner, or the two listed plant species. However we will consult with the U.S. Fish and Wildlife Service on potential effects to the Northern Long-eared Bat.

7. **Dredge/Fill Material Guidelines:** The evaluation of the impact of the proposed activity on the public interest will also include application of the guidelines promulgated by the Administrator of the United States Environmental Protection Agency under authority of Section 404(b) of the Clean Water Act (40 CFR Part 230).

8. **Public Interest Review:** The decision whether to issue the Corps permit will be based on an evaluation of the probable impact including cumulative impacts of the proposed activity on the public interest. That decision will reflect the national concern for both protection and utilization of important resources. The benefit which reasonably may be expected to accrue from the proposal must be balanced against its reasonably foreseeable detriments. All factors which may be relevant to the proposal will be considered including the cumulative effects thereof; among those are conservation, economics, aesthetics, general environmental concerns, wetlands, cultural values, fish and wildlife values, flood hazards, floodplain values, land use, navigation, shoreline erosion and accretion, recreation, water supply and conservation, water quality, energy needs, safety, food production and, in general, the needs and welfare of the people.

9. **Who Should Reply:** The Corps of Engineers is soliciting comments from the public; Federal, state, and local agencies and officials; Indian Tribes; and other interested parties in order to consider and evaluate the impacts of this proposed activity. Any comments received will be considered by the Corps of Engineers to determine whether to issue, modify, condition or deny a permit for this proposal. To make this decision, comments are used to assess impacts on endangered species, historic properties, water quality, general environmental effects, and the other public interest factors listed above. Comments are used in the preparation of an Environmental Assessment and/or an Environmental Impact Statement pursuant to the National Environmental Policy Act. Comments are also used to determine the need for a public hearing and to determine the overall public interest of the proposed activity. These statements should be submitted on or before the expiration date specified at the top of page 1. These statements should bear upon the adequacy of plans and suitability of locations and should, if appropriate, suggest any changes considered desirable.

10. **Public Hearing Requests:** Any person may request, in writing, within the comment period specified in this notice, that a public hearing be held to consider this application. Requests for public hearings shall state, with particularity, the reasons for holding a public hearing. A request may be denied if substantive reasons for holding a hearing are not provided.

11. **Reply to the Corps.** Comments concerning the Corps permit should be addressed to the District Engineer, US Army Corps of Engineers, Rock Island District, ATTN: OD-P, Clock Tower Building - Post Office Box 2004, Rock Island, Illinois 61204-2004. **Mr. Albert Frohlich (309-794-5859)**, email: Albert.J.Frohlich@usace.army.mil, may be contacted for additional information.



Attach
Plan

Mr. Albert J. Frohlich
Project Manager
Regulatory Branch

REQUEST TO POSTMASTERS: Please post this notice conspicuously and continuously until the expiration date specified at the top of page 1.

NOTICE TO EDITORS: This notice is provided as background information for your use in formatting news stories. This notice is not a contract for classified display advertising.

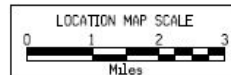
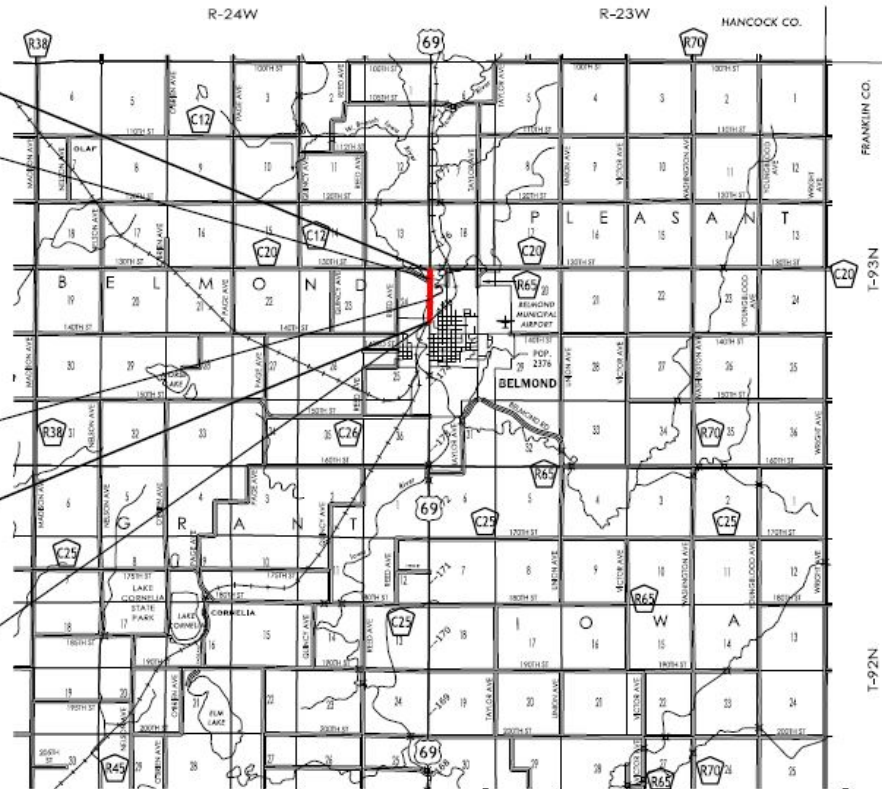
STA. 481+00.00
END PROJECT

STA. 473+30.00
FHWA 54330
MAINT. NO. 9975.6S069
DESIGN 355
BRFN-069-7(34)--39-99
ON U.S. 69, OVER WEST BRANCH
OF THE IOWA RIVER
AT SOUTH JUNCTION OF COUNTY ROAD C-20

STA. 456+80.00
FHWA 54320
MAINT. NO. 9975.3S069
DESIGN 255
BRFN-069-7(38)--39-99
ON U.S. 69, OVER IOWA RIVER
0.2 MILES SOUTH OF SOUTH JUNCTION
OF COUNTY ROAD C-20

STA. 439+90.00
BEGIN PROJECT

UNION PACIFIC RAILROAD
U.S. 69
M.P. 46.92
DOT NO. 196421D



CEMVR-OD-P-2020-581
Sheet 1 of 10
Project Location

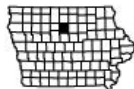




Figure 1A. U.S. 69 grading south of the Iowa River Bridge in Belmont, Wright County, Iowa.

N



0 50 100 150 200 Feet

Legend

- Construction Need Line
- New Bridges
- New Guardrail Blisters
- New Grading



CEMVR-OD-P-2020-581
Sheet 2 of 10
Project Details

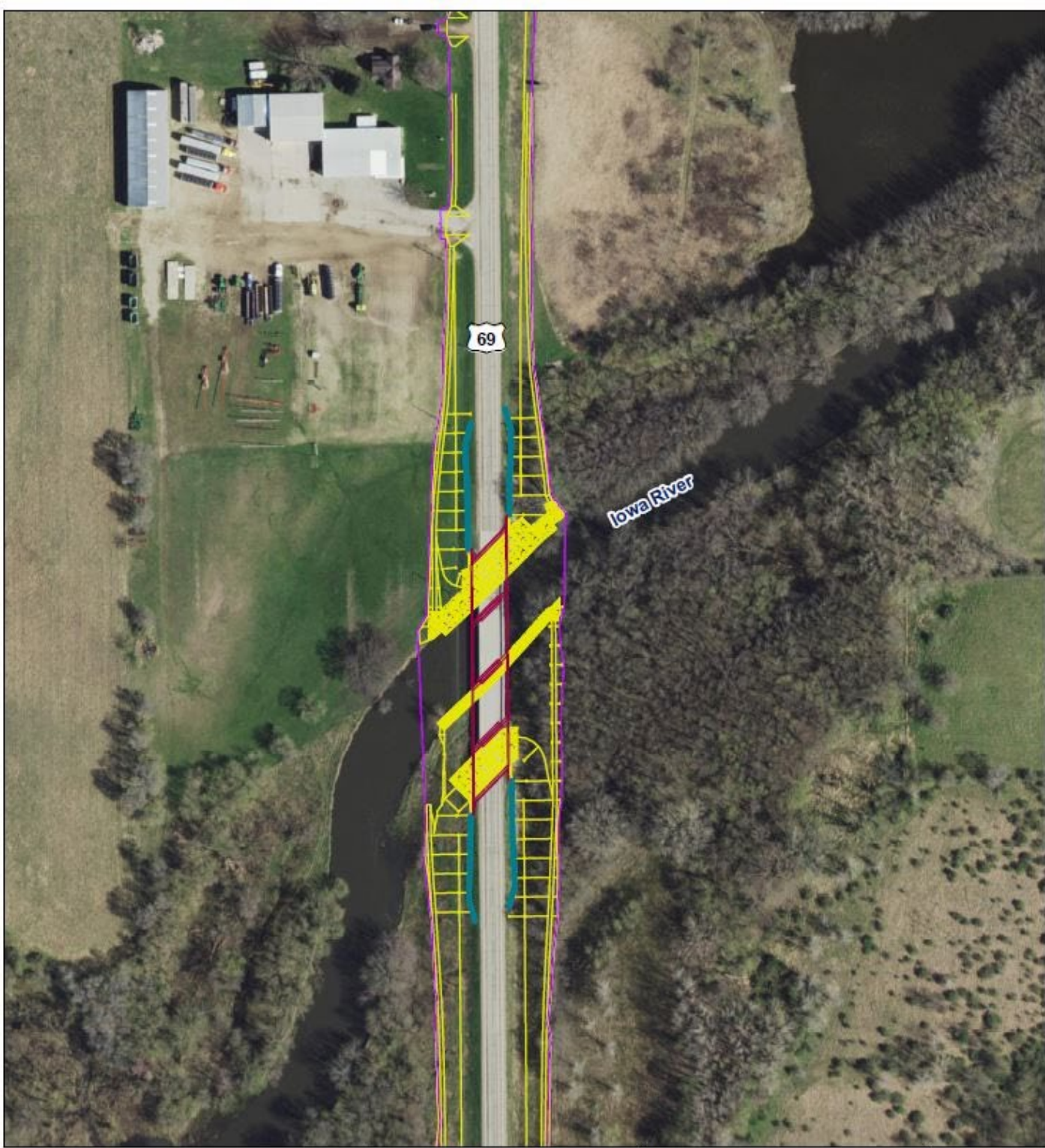


Figure 1B. U.S. 69 over the Iowa River Bridge in Belmont, Wright County, Iowa.

N



0 50 100 150 200 Feet

Legend

-  Construction Need Line
-  New Bridges
-  New Guardrail Blisters
-  New Grading



CEMVR-OD-P-2020-581
Sheet 3 of 10
Project Details

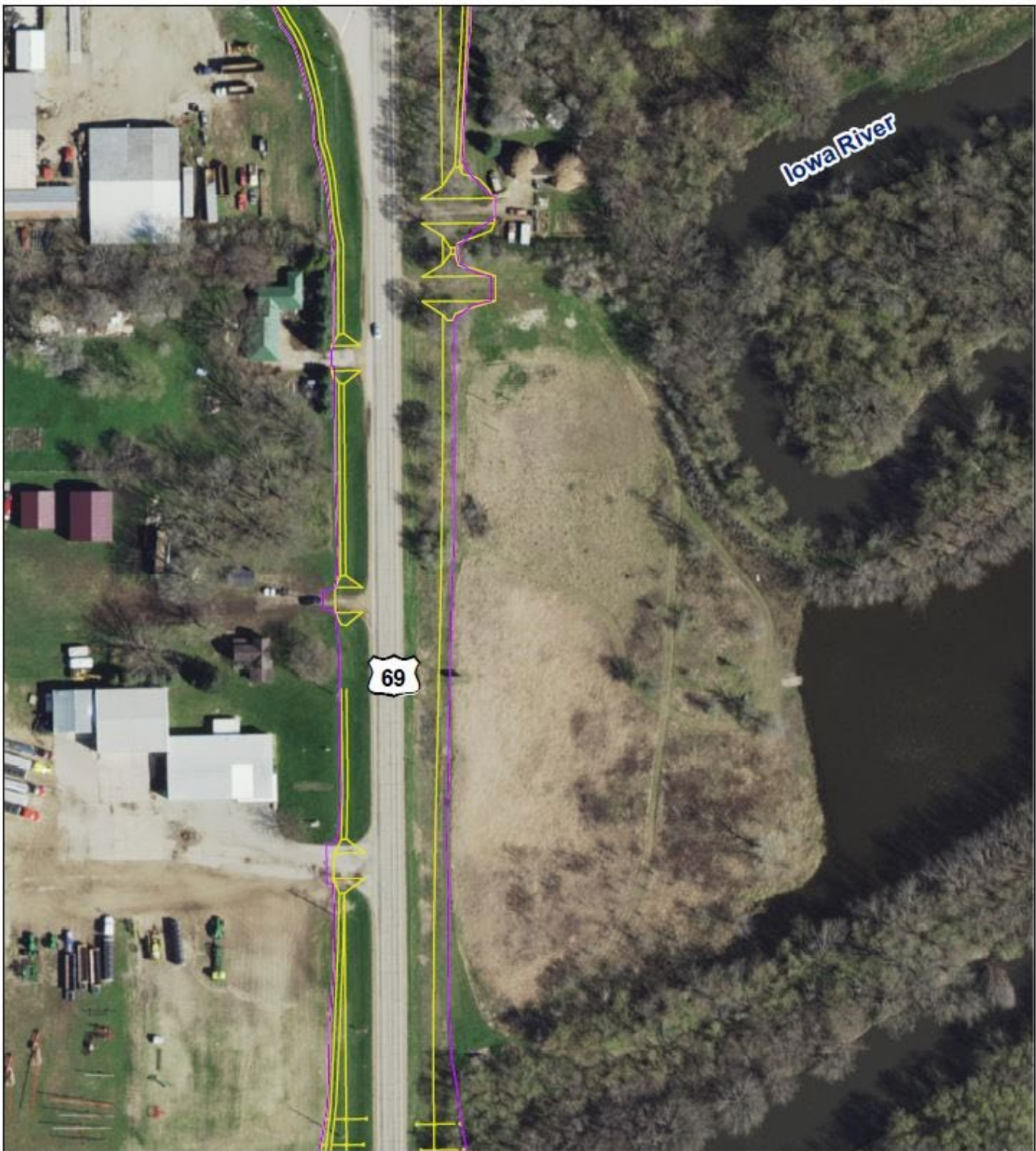
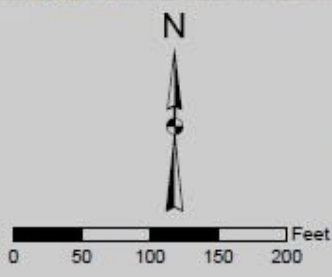


Figure 1C. U.S. 69 Reconstruction between the West Branch of the Iowa River Bridge and the Iowa River Bridge in north Belmond, Wright County, Iowa.



Legend

- Construction Need Line
- New Grading



CEMVR-OD-P-2020-581
Sheet 4 of 10
Project Details

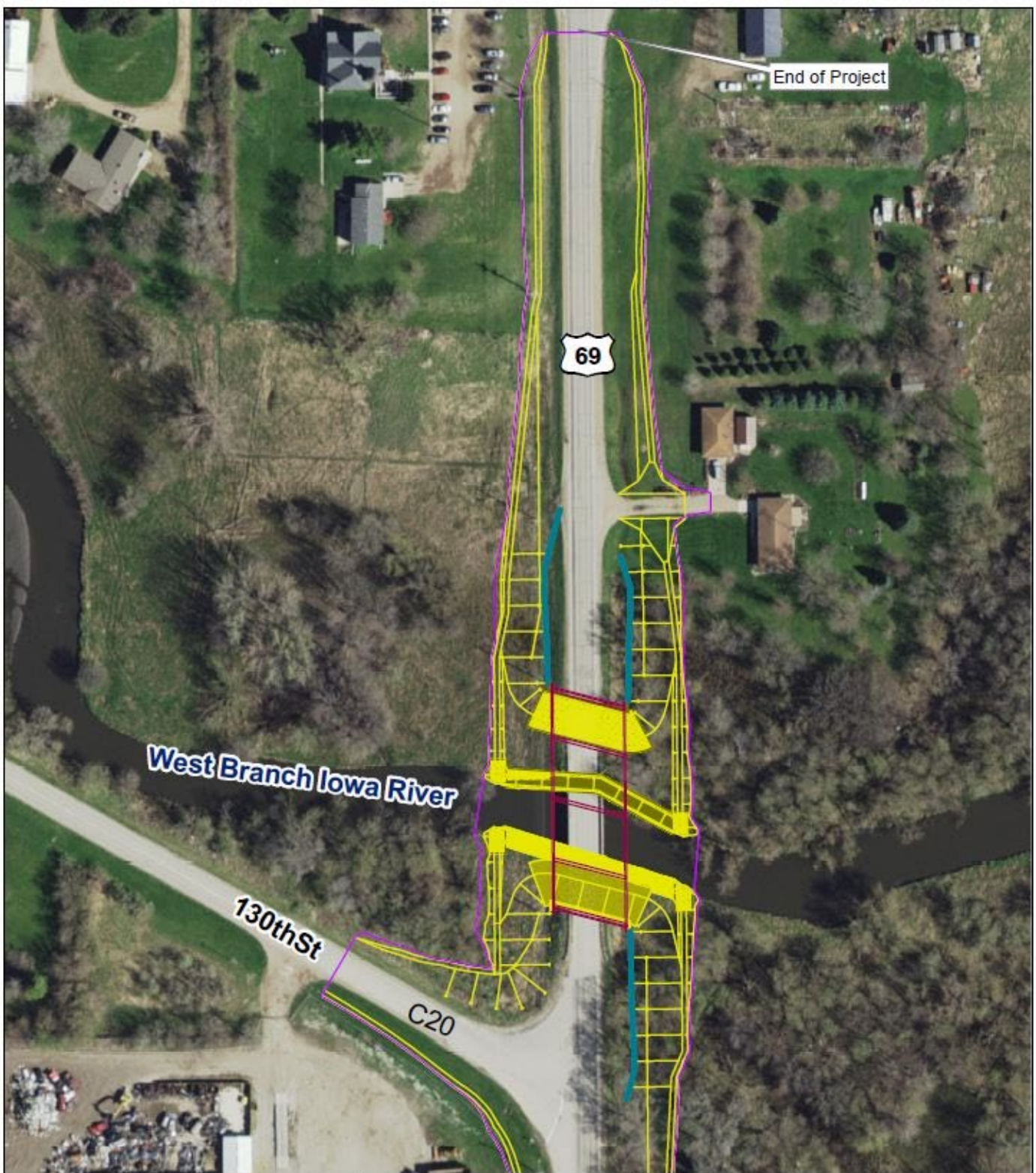
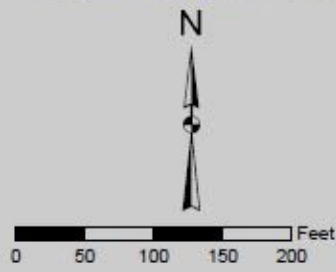


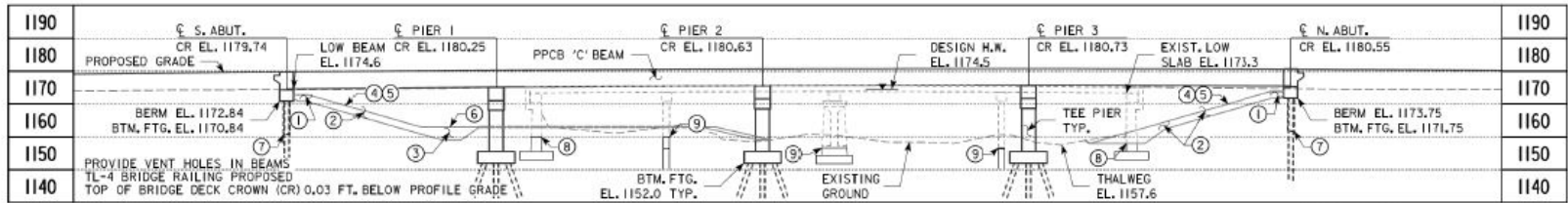
Figure 1D. U.S. 69 over the West Branch of the Iowa River in north Belmond, Wright County, Iowa.



| Legend | |
|-------------------------------------------------------------------------------------|--------------------------|
|  | Construction Need Line |
|  | New Bridges |
|  | New Guardrail Blisters |
|  | North Bridge New Grading |
|  | North Bridge Revetment |



CEMVR-OD-P-2020-581
Sheet 5 of 10
Project Details



BENCH MARK:
BM NO. 99002, FENO TYPE MONUMENT
X=4,889,971.1 Y=3,172,981.0
IOWA STATE PLANE NORTH, SURVEY FEET
ELEV. = 1172.75 NAVD88/IARTN (GE01D12A)

+1.7000% -1.3000%

PVI STA 456+75.00
PVI EL. 1183.35
LVC = 700 FT.

PROPOSED PROFILE GRADE US 69

HYDRAULIC DATA

DRAINAGE AREA = 348.3 SQ. MI.
STREAM SLOPE = 1.03 FT./MI.
AVG. LOW WATER STAGE = EL. 1159.9

Q₂₅ = 6,590 CFS (6,590 CFS)
STAGE = EL. 1173.4

Q₅₀ = 8,010 CFS (8,010 CFS)
STAGE = EL. 1174.5
BACKWATER = -0.47 FT.
AVG. BRIDGE VELOCITY = 2.4 FPS

Q₁₀₀ = 8,489 CFS (9,530 CFS)
STAGE = EL. 1175.5
BACKWATER = 0.40 FT./0.38 FT.
AVG. BRIDGE VELOCITY = 2.3 FPS

Q₂₀₀ = 8,244 CFS (11,170 CFS)
STAGE = EL. 1176.3
AVG. BRIDGE VELOCITY = 2.3 FPS
CALCULATED DESIGN SCOUR = EL. 1147.7

Q₅₀₀ = 8,587 CFS (13,440 CFS)
STAGE = EL. 1177.3
AVG. BRIDGE VELOCITY = 2.3 FPS
CALCULATED CHECK SCOUR = EL. 1147.7

Q OVERTOP = 8,270 CFS (57 YR.)
ROADWAY OVERTOP EL. 1174.9
STA. 448+70

DISCHARGE IN PARANS. REPRESENTS TOTAL STREAMFLOW.
BACKWATER REFERENCES CHANGE FROM PRE-DEVELOPMENT/EXISTING CONDITION NEAR FIRST HIGH-DAMAGE POTENTIAL DEVELOPMENT UPSTREAM OF PROJECT SITE (COMM. DLOGS. S.E. OF BRIDGE).

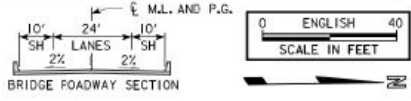
TRAFFIC ESTIMATE

2017 AADT 3,000 V.P.D.
2037 AADT 4,000 V.P.D.
2037 DHV (-) V.P.H.
TRUCKS 14%
TOTAL DESIGN ESALS (-)

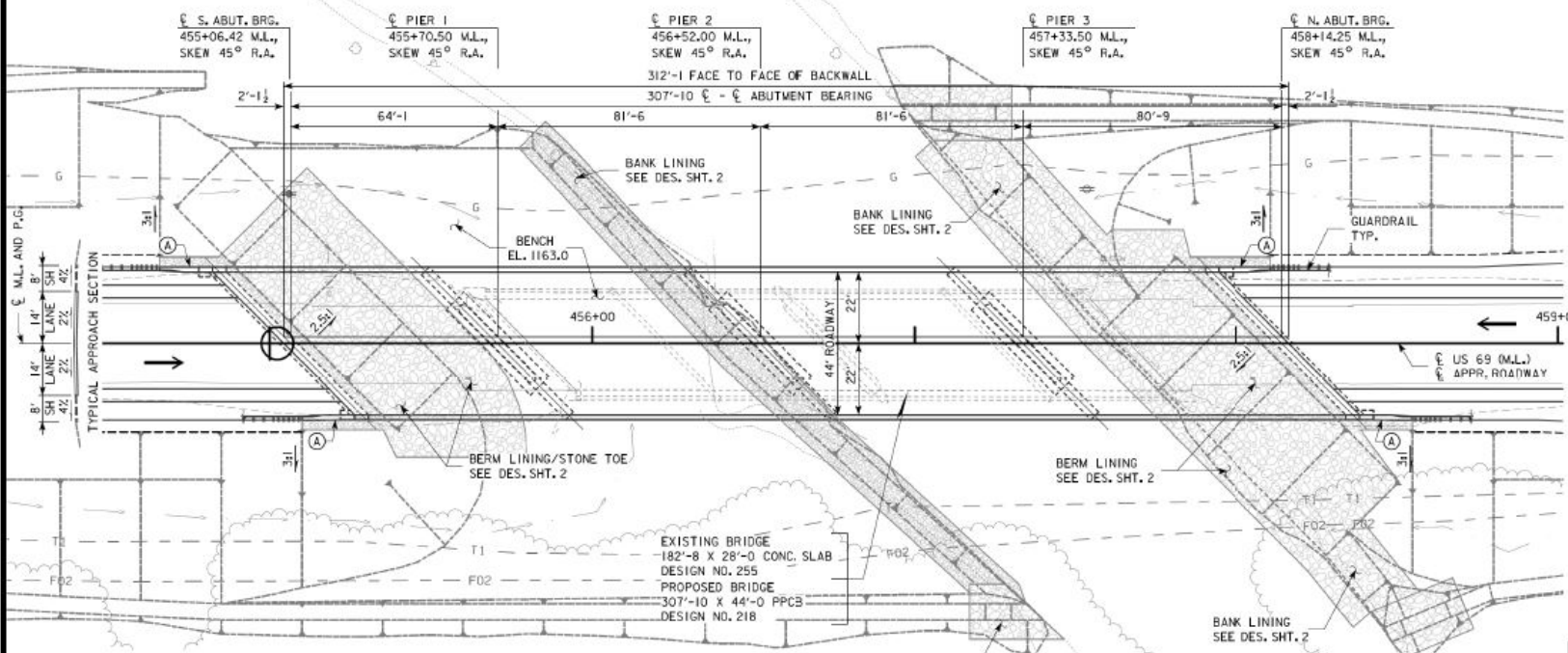
PRELIMINARY

DESIGN FOR 45° SKEW (R.A.)
**307'-10 X 44'-0 PRETENSIONED
PRESTRESSED CONCRETE BEAM BRIDGE**
64'-1, 80'-9 END SPANS LXC BEAMS 81'-6 INTERIOR SPANS
SITUATION PLAN
STATION 456+52.00 M.L. OCT. 2020
WRIGHT COUNTY
IOWA DEPARTMENT OF TRANSPORTATION - HIGHWAY DIVISION
DESIGN SHEET NO. 1 OF 3 FILE NO. 31312 DESIGN NO. 218

LONGITUDINAL SECTION ALONG C APPROACH ROADWAY



- 1 EROSION STONE ABUTMENT FACING
- 2 BERM LINING
- 3 STONE TOE
- 4 GRADING SURFACE
- 5 2.5:1 BERM SLOPE NOR. C ABUT.
- 6 BENCH EL. 1163.0 SOUTH
- 7 BTM. PRE-BORE EL. 1160.8 SOUTH, EL. 1161.8 NORTH
- 8 REMOVE EXIST. ABUT. TO EL. 1160.0 SOUTH, EL. 1158.0 NORTH
- 9 REMOVE EXISTING PIER TO ELEV. AS FOLLOWS:
SOUTH EL. 1160.0, MIDDLE EL. 1156.6, NORTH EL. 1156.6
- A 5'-0" WING EXTENSION



LOCATION
US 69 OVER IOWA RIVER
T 93 N R 23 W
SECTION 19
PLEASANT TOWNSHIP
WRIGHT COUNTY
BRIDGE MAINT. NO. 9975.35069
FHWA NO. 054321
STA. 456+52.00 C M.L.
LONG./LAT. -93.616741° / 42.856283°

UTILITY LEGEND
F02 - BURIED FIBER OPTIC IOWA NETWORK SERVICES
T1 - BURIED TELEPHONE FRONTIER COMMUNICATIONS
G - GAS ALLIANT ENERGY
PPA - POLE ELECTRIC ALLIANT ENERGY

SITUATION PLAN

ROCK FLUME
TYP. S.E., N.E. AND N.W.
SEE DES. SHT. 2

CEMVR-OD-P-2020-581
Sheet 6 of 10
New 307' x 44' Bridge over Iowa River

| | | | | | | |
|------|--------------------------------------------------------------------------------------------|-------------------------------|------------------------|-----------------|-------------------------------------------|------|
| 1190 | CR EL. 1179.63 | CR EL. 1179.49 | CR EL. 1179.27 | CR EL. 1179.00 | CR EL. 1178.76 | 1190 |
| 1180 | PROPOSED GRADE | EXIST. LOW BEAM EL. 1170.0 | DESIGN M.W. EL. 1175.2 | | LOW SLAB EL. 1176.1 | 1180 |
| 1170 | | | | | | 1170 |
| 1160 | BERM EL. 1175.42 BTM. FTG. EL. 1173.42 | | | | BERM EL. 1174.59 BTM. FTG. EL. 1172.59 | 1160 |
| 1150 | | | | | | 1150 |
| 1140 | TL-4 BRIDGE RAILING PROPOSED TOP OF BRIDGE DECK CROWN (CR) 0.03 FT. BELOW PROFILE GRADE | FULLY ENCASED PILE BENT, TYP. | THALWEG EL. 1159.6 | EXISTING GROUND | BTM. ENCASE. EL. 1156.6 TYP. | 1140 |

BENCH MARK:
 BM NO. 99002, FEND TYPE MONUMENT
 X=4,889,971.1 Y=3,772,981.0
 IOWA STATE PLANE NORTH, SURVEY FEET
 ELEV. = 1172.75 NAVD88/IARTN (GEOID12A)

+0.5000% -0.3000%

PVI STA 472+00.00
 PVI EL. 1181.52
 LVC = 1000 FT.

PROPOSED PROFILE
 GRADE US 69

HYDRAULIC DATA

DRAINAGE AREA = 150.5 SQ. MI.
 STREAM SLOPE = 0.86 FT./MI.
 AVG. LOW WATER STAGE = EL. 1160.6

Q₂₅ = 4,510 CFS (4,510 CFS)
 STAGE = EL. 1174.0

Q₅₀ = 5,450 CFS (5,450 CFS)
 STAGE = EL. 1175.2
 BACKWATER = -0.18 FT.
 AVG. BRIDGE VELOCITY = 2.6 FPS

Q₁₀₀ = 6,335 CFS (6,480 CFS)
 STAGE = EL. 1176.1
 BACKWATER = 0.39 FT./0.24 FT.
 AVG. BRIDGE VELOCITY = 2.8 FPS

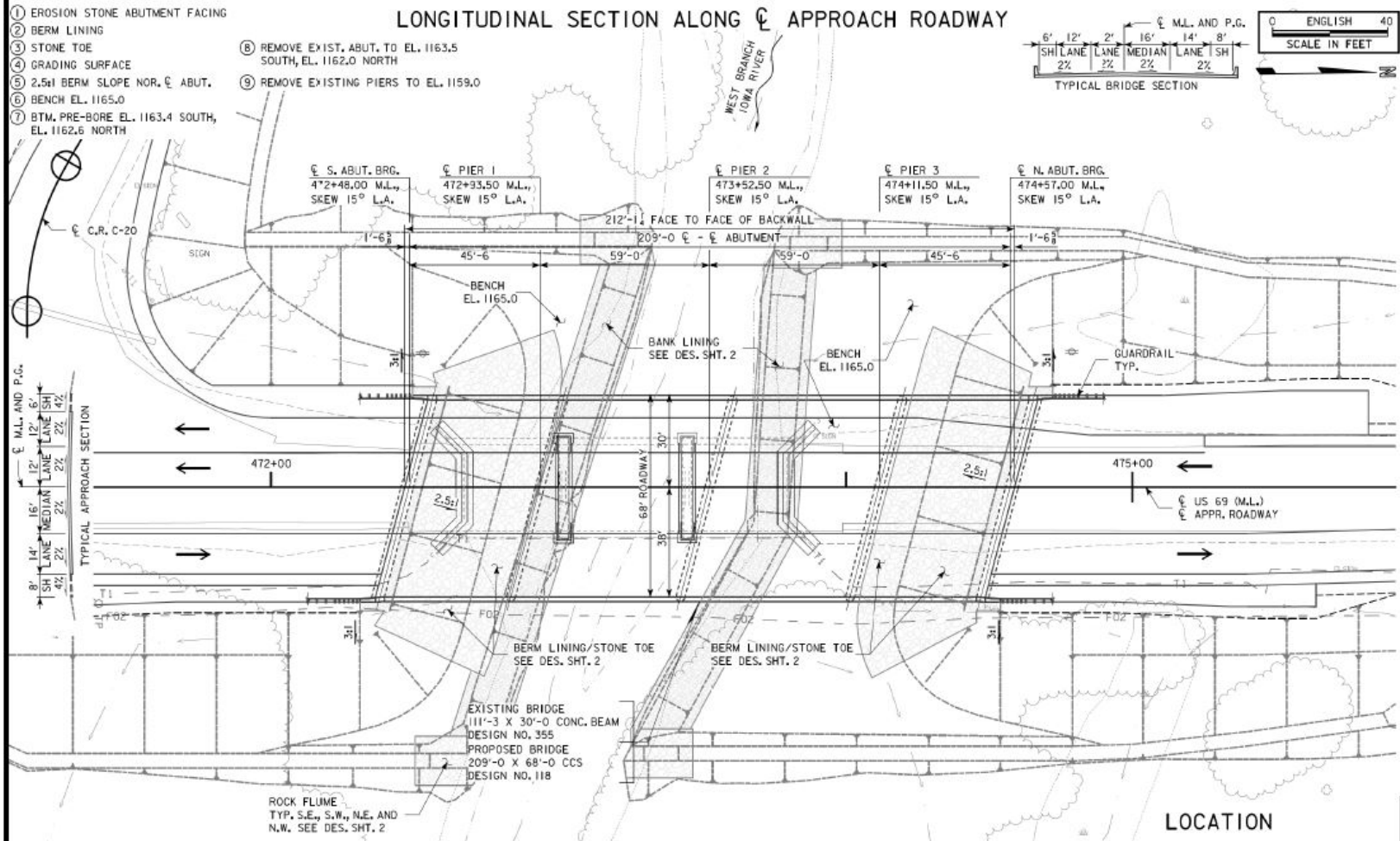
Q₂₀₀ = 7,010 CFS (7,600 CFS)
 STAGE = EL. 1176.9
 AVG. BRIDGE VELOCITY = 2.9 FPS
 CALCULATED DESIGN SCOUR = EL. 1149.3

Q₅₀₀ = 7,239 CFS (8,880 CFS)
 STAGE = EL. 1178.0
 AVG. BRIDGE VELOCITY = 3.0 FPS
 CALCULATED CHECK SCOUR = EL. 1149.3

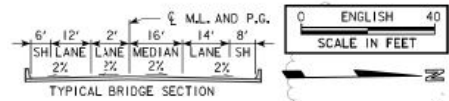
Q OVERTOP = 5,810 CFS (64 YR.)
 ROADWAY OVERTOP EL. 1175.8
 STA. 479+00

DISCHARGE IN PARANS. REPRESENTS
 TOTAL STREAMFLOW.
 BACKWATER REFERENCES CHANGE FROM
 PRE-DEVELOPMENT/EXISTING CONDITION
 NEAR FIRST HIGH-DAMAGE POTENTIAL
 DEVELOPMENT UPSTREAM OF PROJECT
 SITE (RES./CHURCH N.W. OF BRIDGE).

LONGITUDINAL SECTION ALONG C APPROACH ROADWAY



- 1 EROSION STONE ABUTMENT FACING
- 2 BERM LINING
- 3 STONE TOE
- 4 GRADING SURFACE
- 5 2.5H BERM SLOPE NOR. C. ABUT.
- 6 BENCH EL. 1165.0
- 7 BTM. PRE-BORE EL. 1163.4 SOUTH, EL. 1162.6 NORTH
- 8 REMOVE EXIST. ABUT. TO EL. 1163.5 SOUTH, EL. 1162.0 NORTH
- 9 REMOVE EXISTING PIERS TO EL. 1159.0



UTILITY LEGEND

F02 - BURIED FIBER OPTIC IOWA NETWORK SERVICES
 T1 - BURIED TELEPHONE FRONTIER COMMUNICATIONS
 G - GAS ALLIANT ENERGY
 PPA - POLE ELECTRIC ALLIANT ENERGY

SITUATION PLAN

LOCATION

US 69 OVER WEST BRANCH IOWA RIVER
 T 93 N R 23 W
 SECTION 19
 PLEASANT TOWNSHIP
 WRIGHT COUNTY
 BRIDGE MAINT. NO. 9975.6S069
 FHWA NO. 054331
 STA. 473+52.50 M.L.
 LON./LAT. -93.616703° / 42.860949°

PRELIMINARY

DESIGN FOR 15° SKEW (L.A.)

**209'-0 X 68'-0 CONTINUOUS
 CONCRETE SLAB BRIDGE**

45'-6 END SPANS 59'-0 INTERIOR SPANS

SITUATION PLAN

STATION 473+52.50 M.L. OCT. 2020

WRIGHT COUNTY

IOWA DEPARTMENT OF TRANSPORTATION - HIGHWAY DIVISION
 DESIGN SHEET NO. 1 OF 3 FILE NO. 31312 DESIGN NO. 118

CEMVR-OD-P-2020-581

Sheet 7 of 10

New 209' x 68' Bridge over West Branch Iowa River



Figure 2A. U.S. 69 grading project south of the bridge over the Iowa River in Belmond, Wright County, Iowa wetland impacts.

| | | |
|------------------------------------|-------------------------------------------------------------------------------------------------------------------------------------------------------------------------------------------------------------------------------------------------------------------------------------------------------------------------------------------------------------------------------------------------------------------------------------------------|--|
| <p>N</p> <p>0 100 200 300 Feet</p> | <p>Legend</p> <ul style="list-style-type: none"> ● Sample Points Palustrine Forested Wetland Construction Need Line New Bridges | |
|------------------------------------|-------------------------------------------------------------------------------------------------------------------------------------------------------------------------------------------------------------------------------------------------------------------------------------------------------------------------------------------------------------------------------------------------------------------------------------------------|--|

CEMVR-OD-P-2020-581
Sheet 8 of 10
Project Impacts

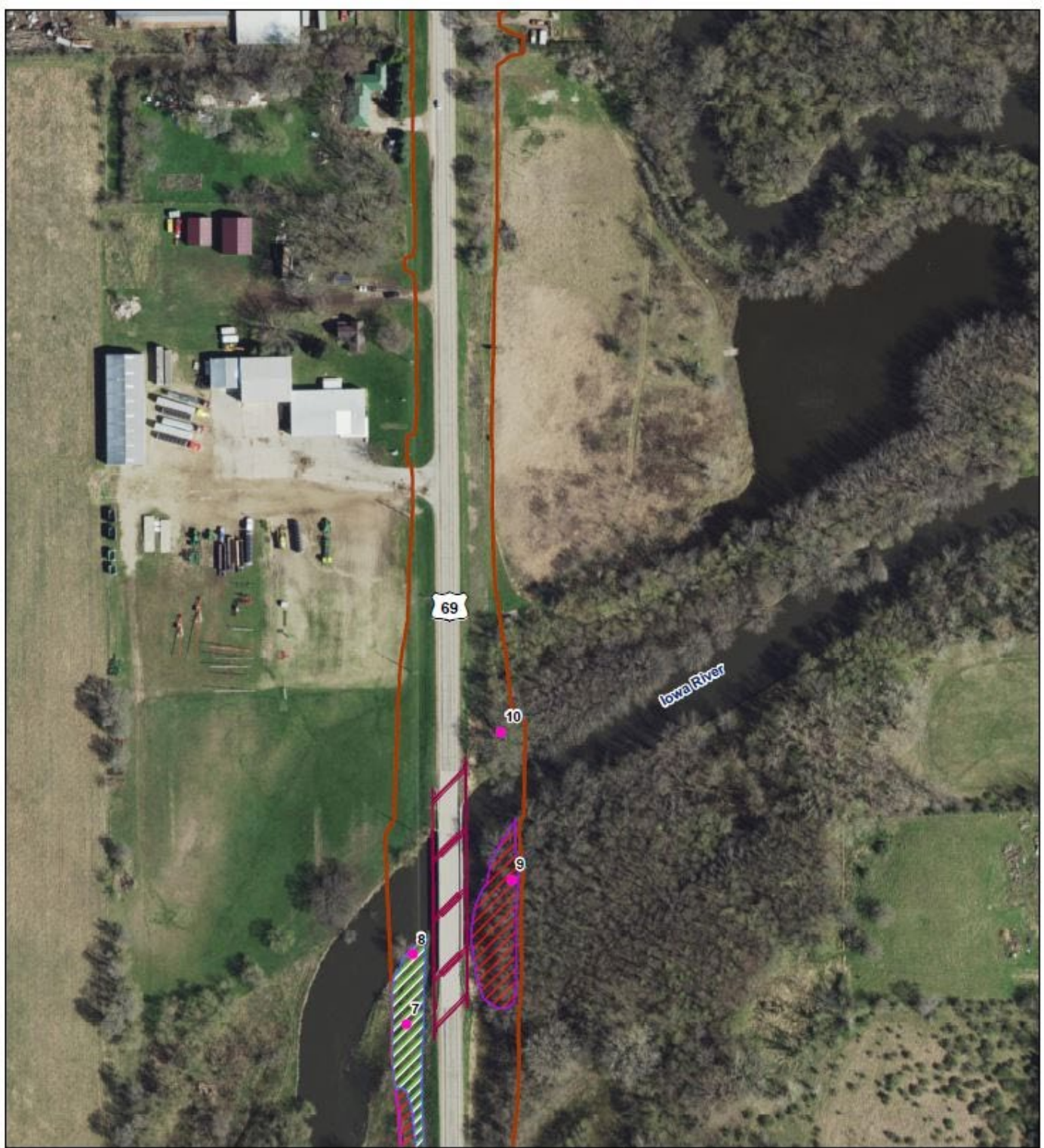


Figure 2B. U.S. 69 grading project at the bridge over the Iowa River in Belmont, Wright County, Iowa wetland impacts.

N



0 50 100 150 Feet

Legend

- Sample Points
- ▨ Palustrine Forested Wetland
- ▭ Construction Need Line
- New Bridges
- ▨ Palustrine Emergent Wetland



CEMVR-OD-P-2020-581
Sheet 9 of 10
Project Impacts

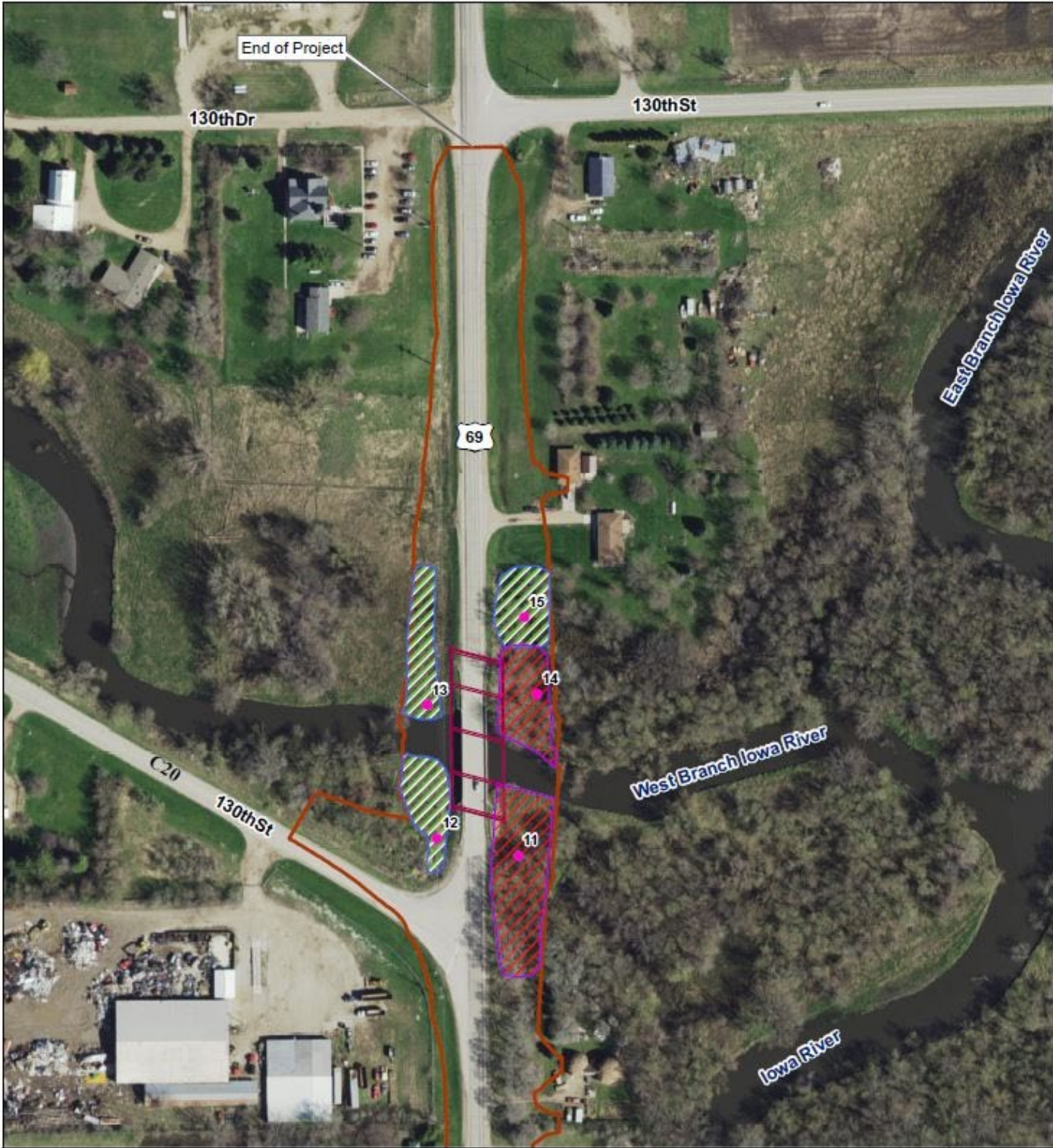
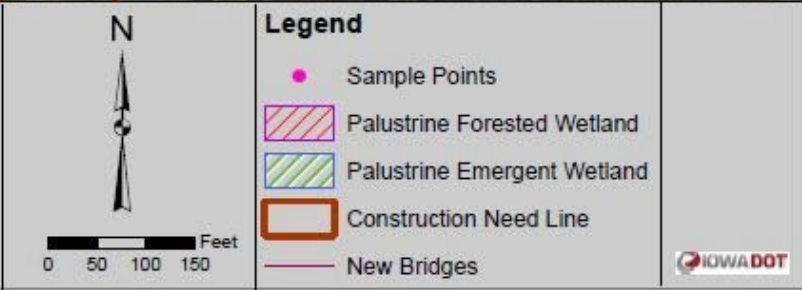


Figure 2C. U.S. 69 grading project at the bridge over the West Branch of the Iowa River in Belmond, Wright County, Iowa wetland impacts.



CEMVR-OD-P-2020-581
Sheet 10 of 10
Project Impacts